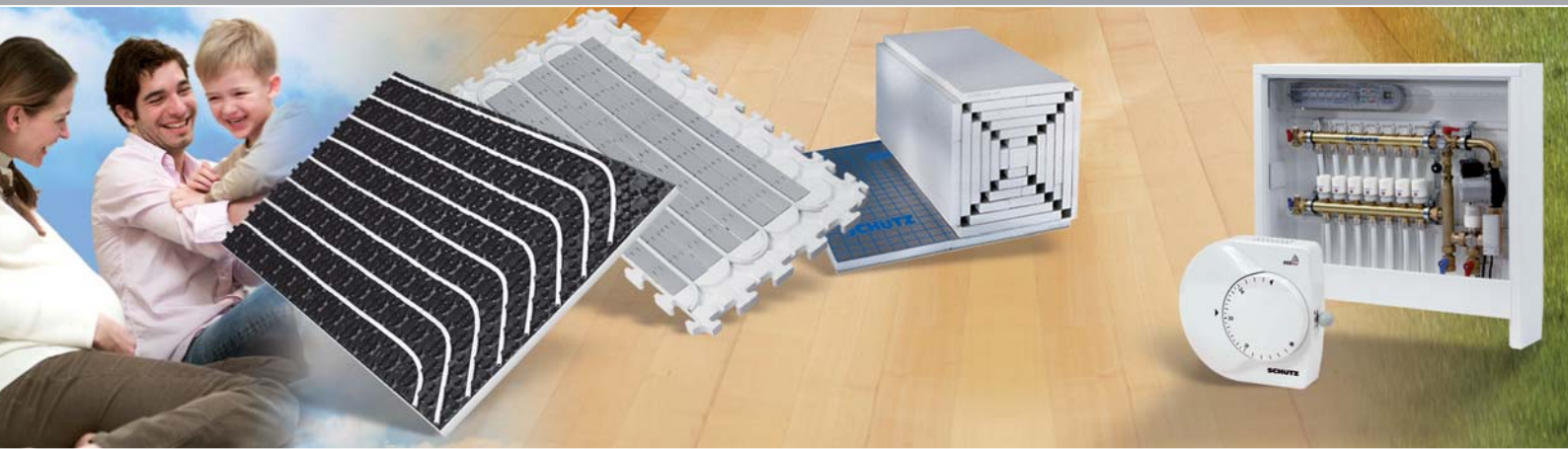




UNDERFLOOR HEATING SYSTEMS BY SCHÜTZ.



System solutions
for today
and tomorrow.

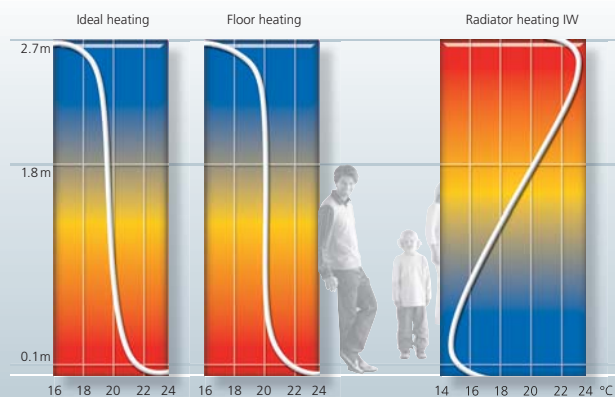
Modern underfloor heating by SCHÜTZ – the basis for a good life.



The trend in heating private and public buildings is quite clearly towards modern underfloor heating. There are many reasons for this. Not only are living comfort and health an important decision criteria, but energy, cost efficiency and sustainability are also key advantages of underfloor heating.

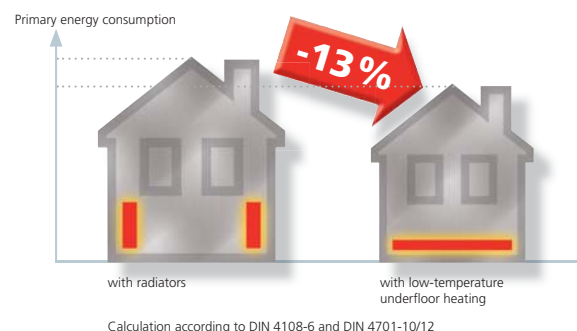
Comfortable, cosy and healthy.

- Comfort and cosiness through large surface, mellow radiant heat
- Ideal distribution of temperature (see fig.)
- Reduced airborne dust compared with traditional radiators (convection)
- Healthier atmosphere (ideal for sufferer of dust allergies)



Economical, long-lasting and green.

Low flow temperatures of underfloor heating in combination with modern heating generators such as condensing boilers, heat pumps and solar panels cut energy costs by up to 13 %.





At our headquarters in Selters and at international sites more than 2,500 employees develop and produce solutions to meet our customers demands.

SCHÜTZ – the name for innovative solutions.

SCHÜTZ underfloor heating systems, that are complete system solutions developed and tailored to your needs. All integrated components supplied from one source.

We invest in your future.

- Permanent innovation management
- Continuous product optimisation
- Constant improvement of the energy balance
- Quality management according to ISO 9000/9001

SCHÜTZ – our knowledge is your strength.



Slabstock foam cutting machine



PE-X pipe production



SCHÜTZ – all from one source.

This ensures quality, cost efficiency and facilitates effective planning, ordering and order processing.

- All components produced according to EN 1264
- System components attuned to one another
- Production in Germany
- System warranty



The SCHÜTZ profiled panel system – no more compromises.



The profiled panel system is ideal for any shaped room, all common screed types and adapts to individual needs. Without compromising comfort, quality and flexibility.

Simple diagonal laying of the system heating pipe.

- Without additional securing
- Can be adapted to fit any room shape

Quick installation.

- Virtually no waste
- "Pushbutton" profile for quick installation

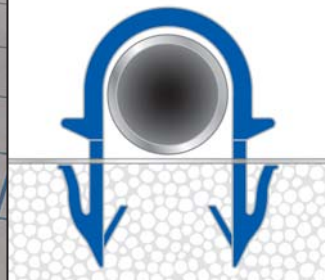
The profiled panel.

- For living areas or public spaces
- For high working load
- Suitable for cement and flowing floor screeds





The SCHÜTZ takk system – practical and economical.



Schütz takk panels ensure that laying is efficient, and time and cost effective.

- Simple laying with any room shape
- Secure heating pipe installation through special layer of woven fabric
- Economical material use – laid without waste



quadro-takk – the square folding role.

A brilliant principle: perfect laying properties, simple transport and storage.

The 8mm "takk" staple provides secure fixing of the SCHÜTZ heating pipe.

"Erwin", the handy installation tool, provides fast and safe assistance with the tacking.

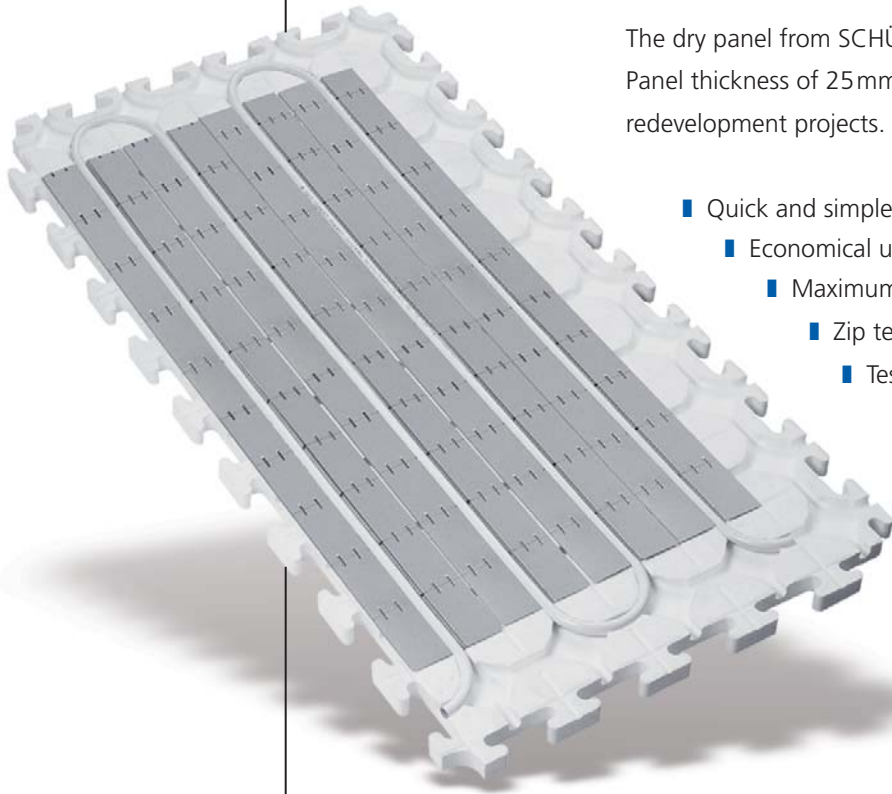


The SCHÜTZ dry panel system – convenient.



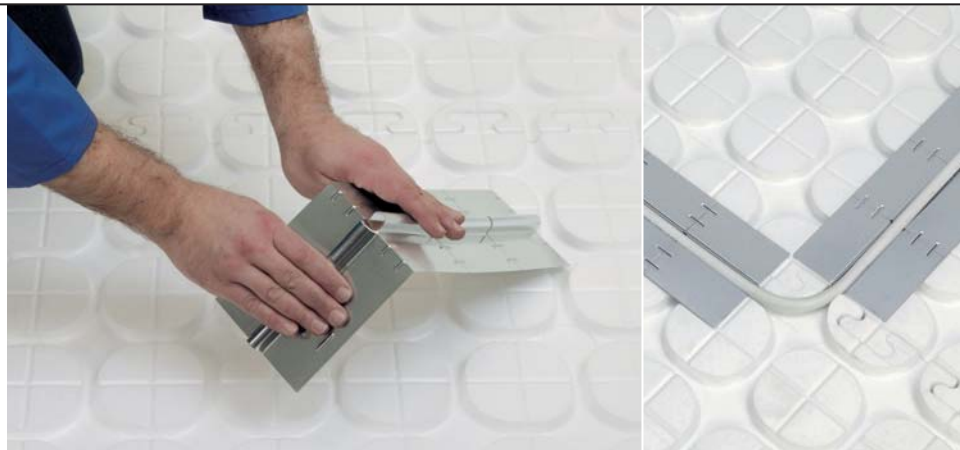
The dry panel from SCHÜTZ guarantees maximum ease of installation. Panel thickness of 25mm or 30mm prove beneficial in old buildings and redevelopment projects.

- Quick and simple installation
- Economical use of material
- Maximum flexibility
- Zip technology for easiest installation
- Tested for construction with dry screed panels*



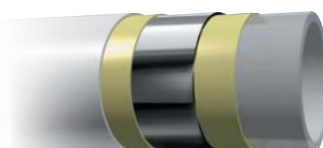
* Please observe the specifications of the manufacturer when using dry screed.

The universal heat diffusing plate allows meander or "snail" shaped circuit design.



Heating pipe easy to insert with the foot.

The tri-o-flex multilayer pipe by SCHÜTZ is oxygen diffusion-proof and ideal for dry construction floor systems.



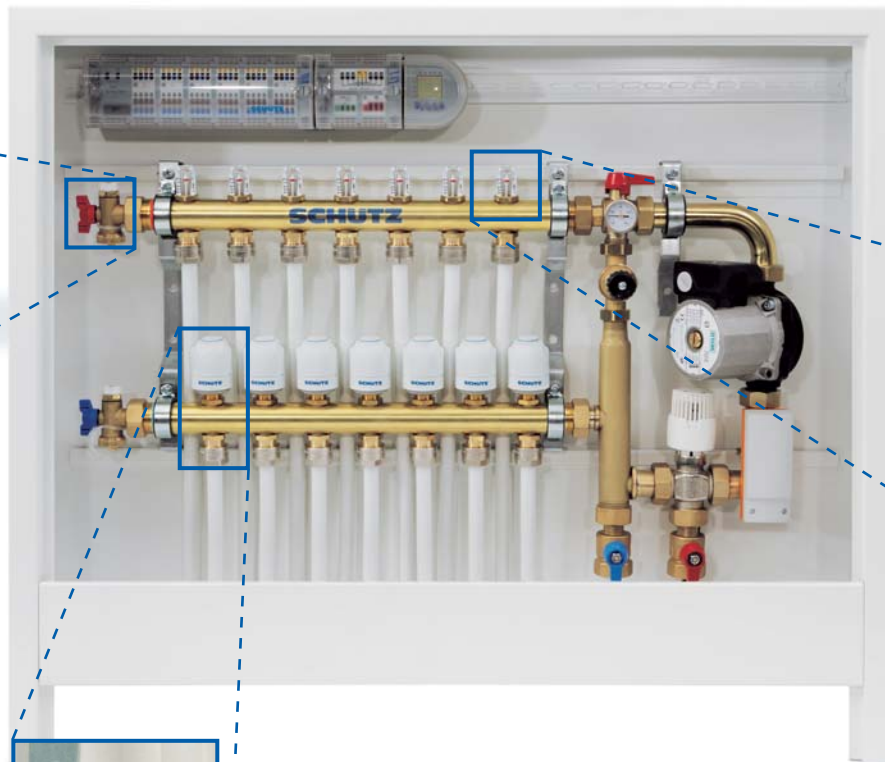
The SCHÜTZ manifold and control systems – tailor-made from one source.



- Varimatic room control module
- 230V / 24V
 - Radio control device
 - EIB modules



Convenient ball valve for filling, flushing and deairating.



Flow distributor DN25 with an integrated flow indicator.



Varimatic actuator with bayonet connection. Our manifolds are available in brass as well as in stainless steel.

All components of the SCHÜTZ manifold and control systems are ideally attuned to one another. From the stylish manifold cabinets to the modern wireless controls, an integrated and harmonised system is produced with the same concept that achieves perfect results.



SCHÜTZ support.

Sophisticated system technology from one source:
At SCHÜTZ we provide our customers with an individual service – from proposal to the delivery of all product components.



The SCHÜTZ service:

- Complete system delivery
- Company planning software
- Design service and technical consultation
- System warranty
- Training and seminars
- Support for exhibition and seminars

SCHÜTZ
ENERGY SYSTEMS

SCHÜTZ GmbH & Co. KGaA

Schützstraße 12

D-56242 Selters

Phone +49 (0) 26 26 / 77-0

Fax +49 (0) 26 26 / 77-6 00

E-Mail info2@schuetz.net

www.schuetz.net